

**Summit®** ... responsible solutions.®

# MOSQUITO & GNAT BARRIER

**KILLS ANTS, TICKS, FLEAS, MOSQUITOES & GNATS**

**Spray Outdoors around Yard & Plants**

**Works Up to 4 Weeks**

**ACTIVE INGREDIENTS**

PERMETHRIN\* ..... 2.5%  
 [\* (3-Phenoxphenyl)Methyl(+) cis / trans  
 3-(2,2dichloroethenyl)-2,2-dimethylcyclopropanecarboxylate]

**OTHER INGREDIENTS** ... 97.5%  
 100.00%

\*Cis / trans isomer ratio: Min. 35% (+) cis  
 Max. 65% (+) trans

EPA Reg No. 6218-76 EPA Est. No. 6218-MD-2

**KEEP OUT OF REACH OF CHILDREN  
 CAUTION**

**Summit®**

... responsible solutions.  
 235 South Kresson Street, Baltimore, MD 21224  
**800-227-8664 | 410-522-0661**

®Registered Trademark of Summit Chemical Co.

**ATTENTION:** This specimen label is provided for informational use only. This product may not yet be available for sale in your state or area. The information found in this label may differ from the information found on the product label you are using. Always follow the instructions for use and precautions on the label of the product you are using.

## Mosquito & Gnat Barrier

PRODUCT FACTS	
<b>What It Is:</b>	Insecticide spray for mosquitoes, gnats, ants, ticks, fleas, and other listed insect pests.
<b>What It Does:</b>	Attach to water hose and spray to kill mosquitoes, gnats, ants, ticks, fleas and other insects as listed.
<b>What Where To Use:</b>	Treat lawns, shrubs, and trees, around doors and window frames or where insects may land or congregate around the home.
<b>Coverage</b>	Covers up to 10,000 square feet.
<b>Questions &amp; Comments:</b>	Call 1-800-227-8664 or visit our website at <a href="http://www.SummitResponsibleSolutions.com">www.SummitResponsibleSolutions.com</a>

FIRST AID
<b>IF ON SKIN OR CLOTHING:</b> Take off contaminated clothing. Rinse skin immediately with plenty of water for 15-20 minutes. Call a poison control center or doctor for treatment advice.
HOT LINE NUMBER
Have the product container or label with you when calling a poison control center or doctor or going for treatment. You may also contact <b>1-800-858-7378</b> for emergency medical treatment information.

PRECAUTIONARY STATEMENTS HAZARDS TO HUMANS AND DOMESTIC ANIMALS CAUTION
Harmful if absorbed through skin. Avoid contact with skin, eyes, or clothing. Wash thoroughly with soap and water after handling and before eating, drinking, chewing gum, using tobacco, or using the toilet. Wear long sleeved shirt, long pants, shoes and socks, and chemical resistant gloves (such as any waterproof material, Selection Category A). Remove and wash contaminated clothing before reuse.
USER SAFETY RECOMMENDATIONS
User should wash hands before eating, drinking, chewing gum, using tobacco, or using the toilet. User should remove clothing/PPE immediately if pesticide gets inside. Then wash thoroughly and put on clean clothing. Users should remove PPE immediately after handling this product. Wash the outside of gloves before removing. As soon as possible, wash thoroughly and change into clean clothing.

ENVIRONMENTAL HAZARDS
This pesticide is extremely toxic to aquatic organisms, including fish and invertebrates. To protect the environment, do not allow pesticide to enter or run off into storm drains, drainage ditches, gutters or surface waters. Applying this product in calm weather when rain is not predicted for the next 24 hours will help to ensure that wind or rain does not blow or wash pesticide off the treatment area. Rinsing application equipment over the treated area will help avoid run off to water bodies or drainage systems. This pesticide is highly toxic to bees exposed to direct treatment on blooming crops or weeds. Do not apply this product or allow it to drift to blooming crops or weeds while bees or other pollinators are foraging the treatment area.



**DIRECTIONS FOR USE**

It is a violation of Federal law to use this product in a manner inconsistent with its labeling.

**Entry Restrictions:**

- Do not allow adults, children or pets to enter the treated area until sprays have dried.

**Application Restrictions:**

- Do not apply this product in a way that will contact adults, children, or pets, either directly or through drift. Remove pets, birds, and cover fish aquariums before spraying.

**All outdoor applications must be limited to spot or crack-and-crevice treatments only, except for the following permitted uses:**

- Treatment to soil or vegetation around structures;
- Applications to lawns, turf, and other vegetation; and
- Applications to building foundations, up to a maximum height of 3 feet.
- Application is prohibited directly into sewers or drains or any other areas where drainage to sewers, storm drains, water bodies, or aquatic habitats can occur.
- Do not allow product to enter any drain during or after application.
- Other than applications to building foundations, all outdoor applications to impervious surfaces such as sidewalks, driveways, patios, porches, and structural surfaces (such as windows, doors, and eaves) are limited to spot and crack-and-crevice applications, only.
- Do not water the treated area to the point of run-off.
- Do not make applications during rain.
- Not for use in outdoor residential misting systems. Other than applications to building foundations, all outdoor applications to impervious surfaces such as sidewalks, driveways, patios, porches, and structural surfaces (such as windows, doors, and eaves) are limited to spot and crack-and-crevice applications, only.

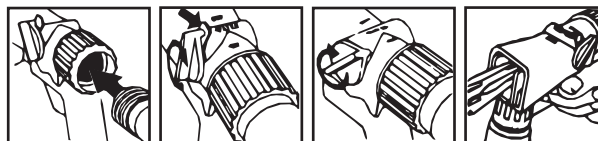
**DIRECTIONS FOR USE THROUGH HOSE-END SPRAYER**

- Make sure the spray equipment to be used is clean and dry. The attached **hose-end type sprayer must be adjusted to deliver a 1 to 100 dilution.**
- **Make sure knob is twisted fully to off position.** Shake well before attaching to hose.
- **Bend safety tab down and turn control knob to "water".** Avoid squeezing bottle. Only clear water will spray when water is turned on. Point nozzle toward item to be sprayed and turn the control knob to "on" to automatically mix insecticide with water.

- When finished spraying turn control knob to "off/closed" position.

**Hose-end convenience!**

*Automatically mixes with water! No measuring or separate applicator!*



1. Attach garden hose to spray nozzle and turn on water supply.
2. Bend safely tab down and turn control to "Water". Clear water will spray.
3. Point nozzle toward item to be sprayed and turn water control knob to "On" to automatically mix with water.
4. Hold bottle level. Use with average water pressure. When finished spraying turn knob to off/closed position.

**APPLICATION INSTRUCTIONS**

- The best times to spray are early evening and early morning.
- The target pest and plant should be completely covered with spray.
- Spray until leaves are wet to the point of run-off.

**NUISANCE PESTS IN OUTDOOR AREAS:**

**PESTS: ants, clover mites, crickets, earwigs, millipedes, sowbugs (pill bugs).**

To help prevent infestation of buildings, treat the building foundation, where pests are active and may find entrance. Also, apply as a crack and crevice residual spray to outside surfaces of building, including porches, screens, window frames, eaves, patios, garages, refuse dumps and other areas where these pests congregate or have been seen. Repeat the treatment as needed to maintain effectiveness.

**OTHER OUTDOOR PESTS:**

**PESTS: ants, crickets, earwigs, fleas, and ticks including deer ticks (which carries Lyme Disease), brown dog ticks and Lone Star ticks:**

For treatment of localized infestations of these insects in areas where there are weeds or bushy areas, spray infested areas thoroughly. For ants, thoroughly wet hills and runways. Repeat application as re-infestation occurs.

**BARRIER SPRAY:**

**PESTS: cluster flies, flying moths, gnats, house flies, mosquitoes:**

For use as an aid in reducing annoyance from these insects. Spray as a crack and crevice to outside surface of screens, doors, window frames or wherever these insect may enter the house. Also treat surfaces around light fixtures on porches or other places where these insects may land or congregate. May be used as a barrier

**Summit®** ... *responsible solutions.*

spray for mosquitoes. Treat lawns, shrubs and trees surrounding the home. Repeat as necessary.

**GRASSES:** Bent, Bermuda, bluegrass, dichondra, fescue, Irish moss, Merion, St. Augustine:

**PESTS:** ants, armyworms, ticks, chinch bugs, crickets, cutworms, fleas, grasshoppers, Japanese beetle grubs, mole crickets, sod webworms: Thoroughly wet down grass a few hours before applying. Home lawns should be no taller than 3 inches at time of application. For heavy infestations repeat application after 2 weeks.

**TREES & SHRUBS:**

**All trees and shrubs:**

**PESTS:** tent caterpillars:

Application should be made when caterpillars are young and tents are first noticed. For best results, apply in the late afternoon or evening when caterpillars have returned to their tents. Wet tents with spray on all sides. A few caterpillars may be seen escaping from the tent, however, they should die within several hours.

**TREES & SHRUBS:** Arizona cypress, azalea, birch, non-bearing citrus, conifers, elm, English ivy, euonymus, weeping fig, fir, poinsettia, tulip poplar, rhododendron, taxus:

**PESTS:** aphids, bagworms, cicadas, exposed thrips, fall cankerworms, inchworms, leafminers, leafrollers, mealybugs, spider mites, whiteflies

For all other Trees and Shrubs Listed: Ensure spray completely covers the target pests and the plants they are infesting. Ensure that applicator follows all precautions listed to ensure there is no runoff and/or spray drift. It is always best practice to apply the product towards the evening when the sun is not as strong. It is most effective to apply Summit® Mosquito & Gnat Barrier when insects are first spotted and are young (immature). Do not allow pets and persons to enter the treatment area until the product is dry.

**Cherry, Honeysuckle:** PESTS: fall webworms

**Conifers:** PESTS: budworms

**Elm:** PESTS: elm leaf beetle, elm spanworm, fall webworms

**Douglas and Grand Firs:** PESTS: tussock moths

**Non-bearing Citrus:** PESTS: citrus black flies

**Oak:** PESTS: oakworm

**Pine:** PESTS: pine beetles, pine moths, pine needle miners, needle scales

**STORAGE AND DISPOSAL**

**Do not contaminate water, food, or feed by storage or disposal.**

**PESTICIDE STORAGE:** Store in a cool, dry place. Do not store near heat or open flame.

**PESTICIDE DISPOSAL & HANDLING: If empty:** Do not reuse this container. Place in trash or offer for recycling, if available.

**If partly filled,** call your local solid waste agency or **1-800-CLEANUP** for disposal instructions. Never place any unused product down any indoor or outdoor drain.

**LIMITED WARRANTY AND LIABILITY**

**Notice:** To the extent consistent with applicable law, the seller makes no other warranties, express or implied, of merchantability or of fitness for a particular purpose or otherwise, that extends beyond the statements made on this label. To the extent consistent with applicable law, the seller shall not be liable for consequential, special or indirect damages resulting from the use, handling, application, storage or disposal of this product or for damages in the nature of penalties, and the buyer and the user waive any right that they may have to such damages.